

Long term performance ICRC2019 proceeding preparation

current ver. draft : https://www.auger.unam.mx/AugerWiki/ICRC2019_LongTerm?action=AttachFile&do=get&target=ICRC_LTP_200619.pdf

EB meetings

General EB phone call for proceeding:

04/06 (all EB members)

14/06 (all EB members)

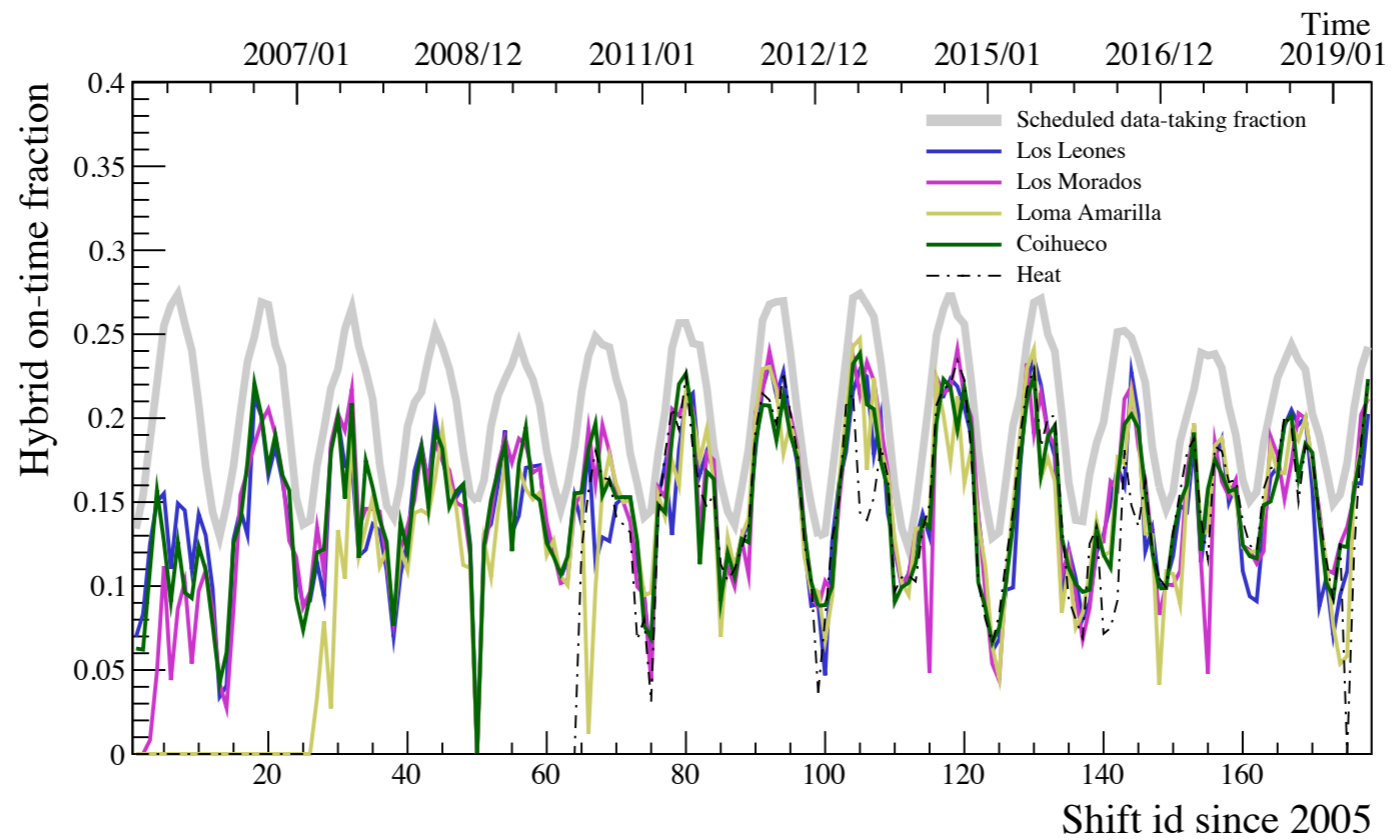
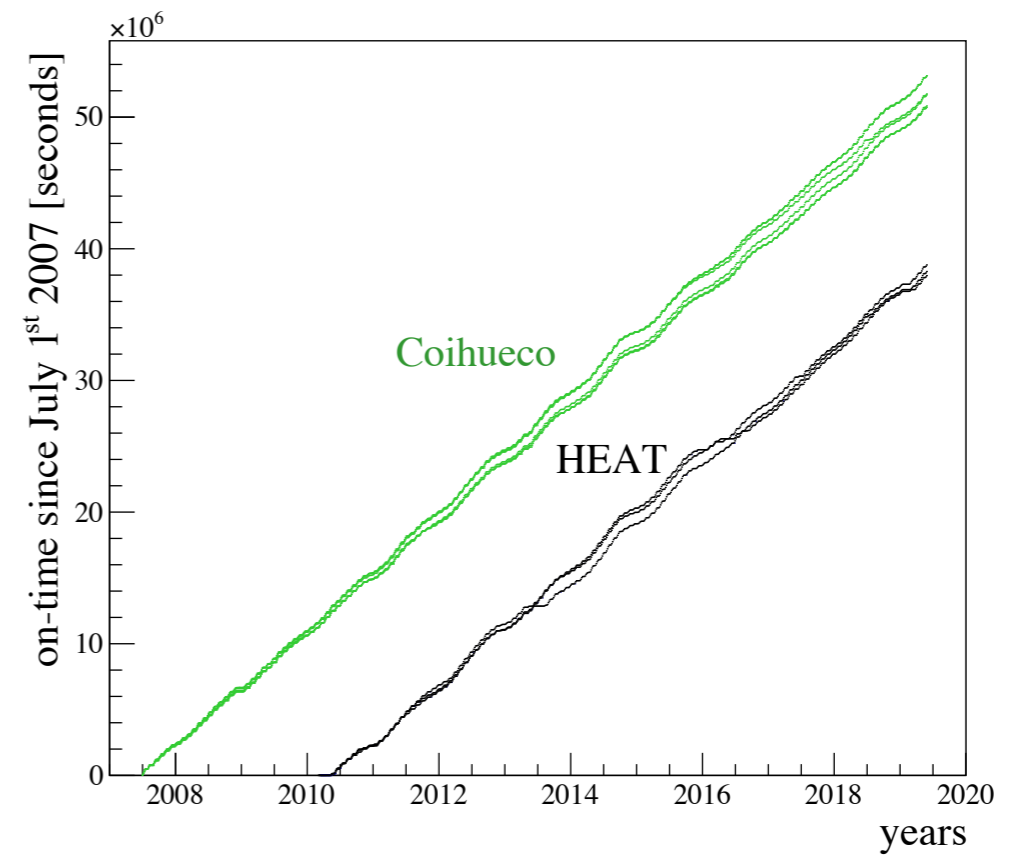
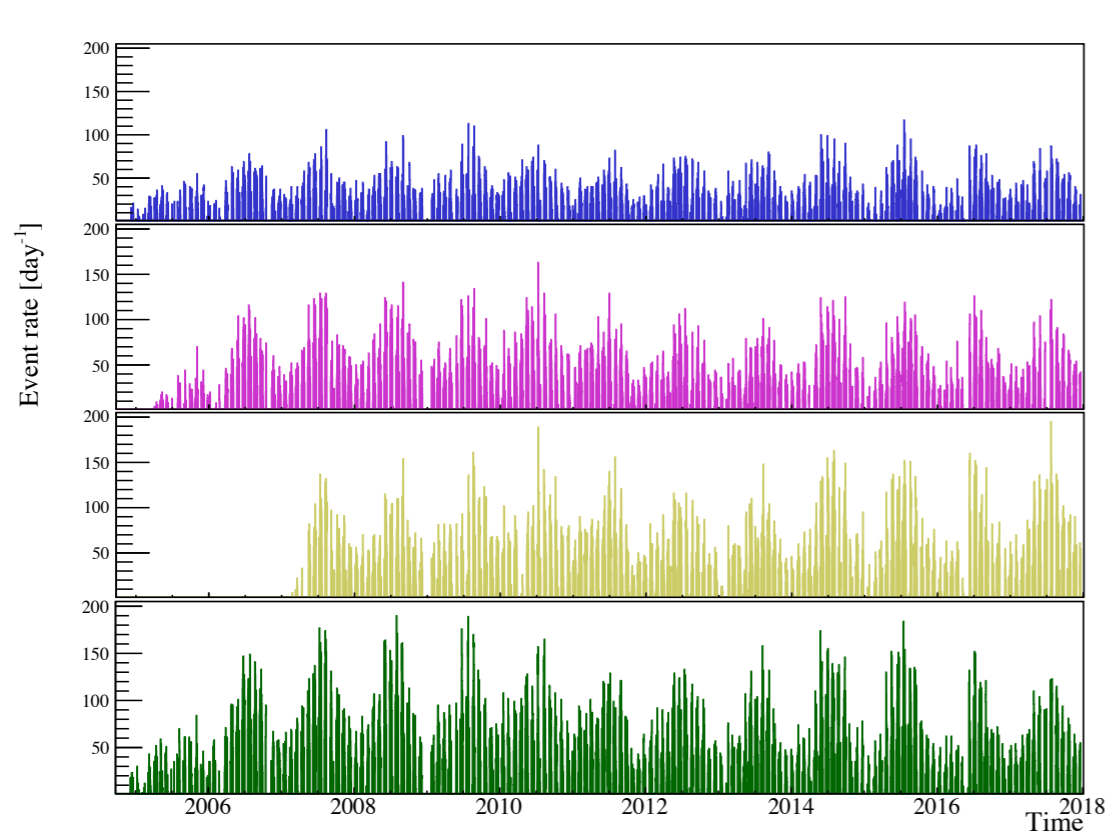
FD EB phone call:

18/06 (Ioana, Lorenzo, Koun)

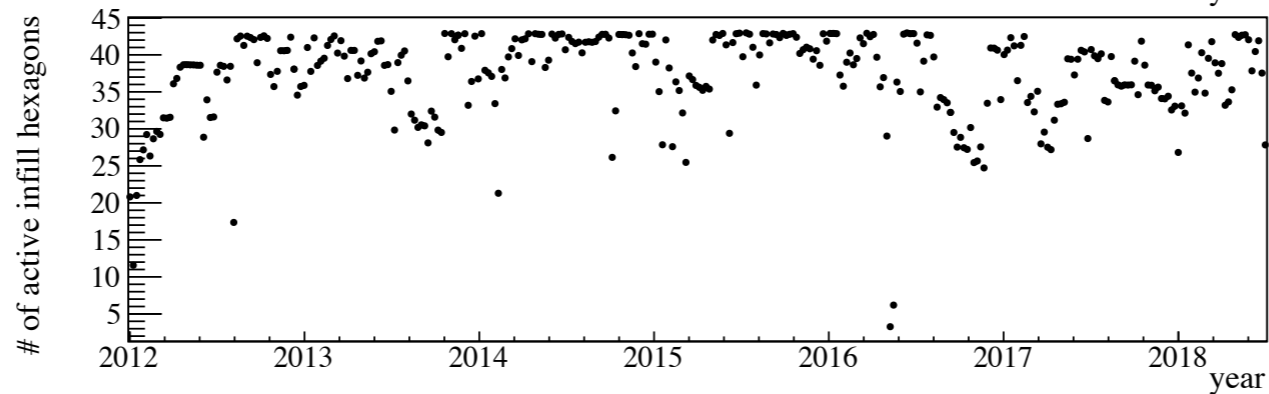
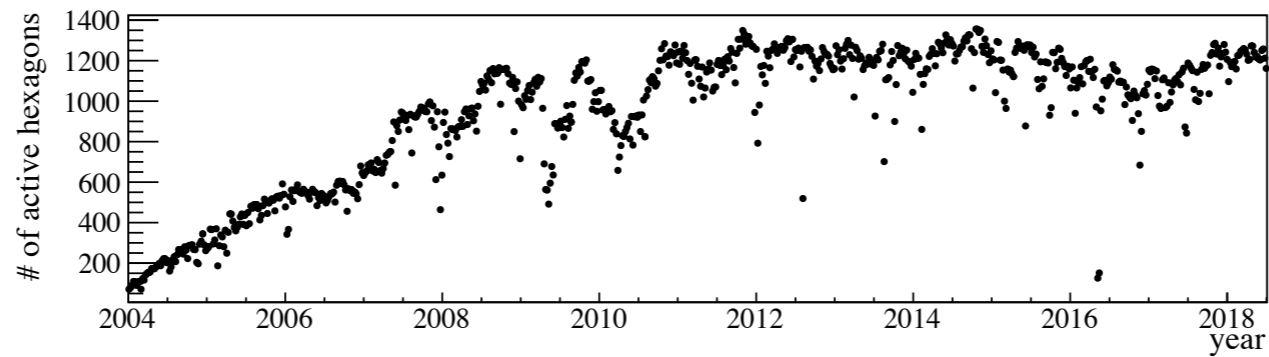
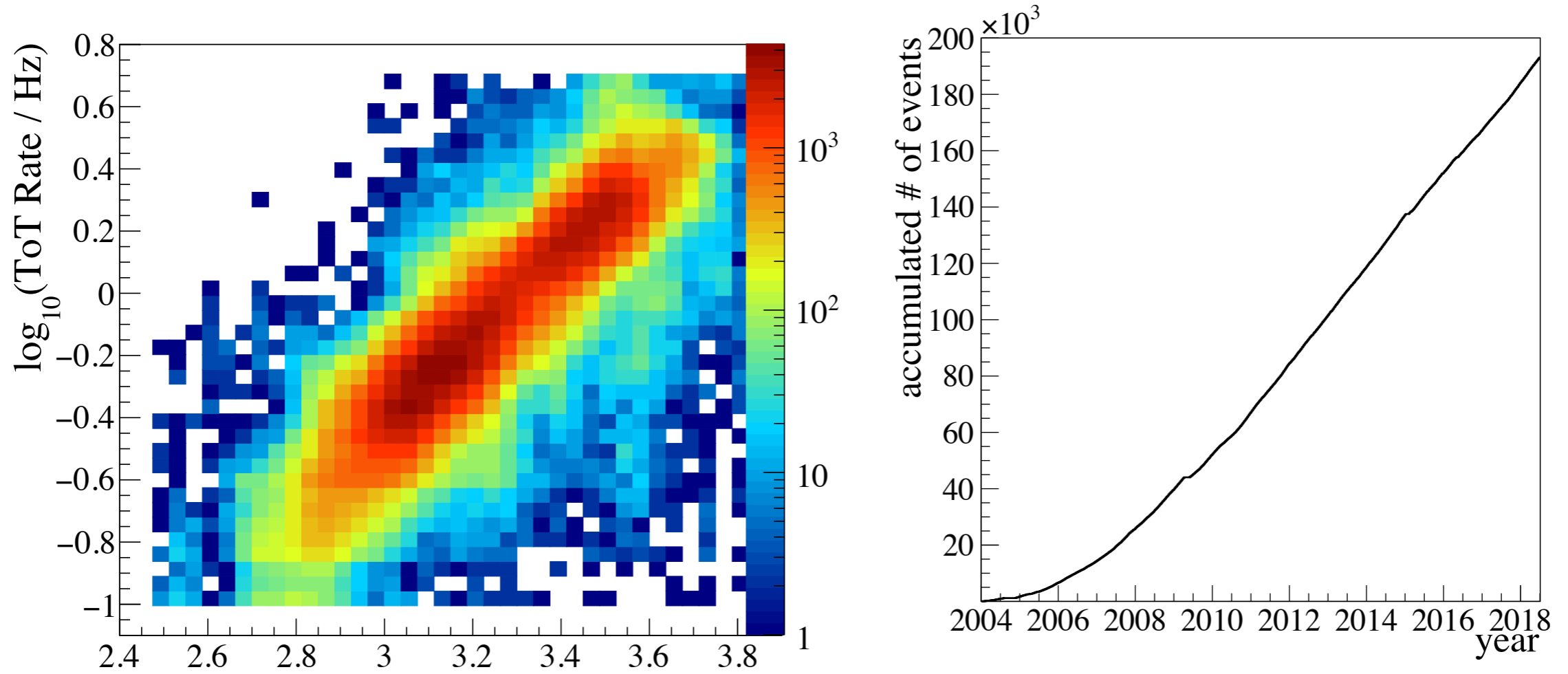
20/06 (Francesco, Rossella, Koun)

(Thanks to all comments, suggestions and your time)

New plots & updated plots - FD



New plots & updated plots - SD



Things to do

1. missing FD calibration plot

2. CLF plot: error bars + PDF version

3. FD event rate: superpose spectrum cut rate?

4. Some numbers:

1) a decrease of A/P more than 15% compared to their initial values -> corresponds to a decrease of the ToT rate of less than **XX%**

2) the exponential decay of the A/P has lowered from **xx to yy**.

3) 85% of the PMTs are expected to remain at >95% of their current A/P in 2030, which corresponds to a ToT rate decrease of less than **XX%**

4) some numbers related to monitoring, to enrich the text?