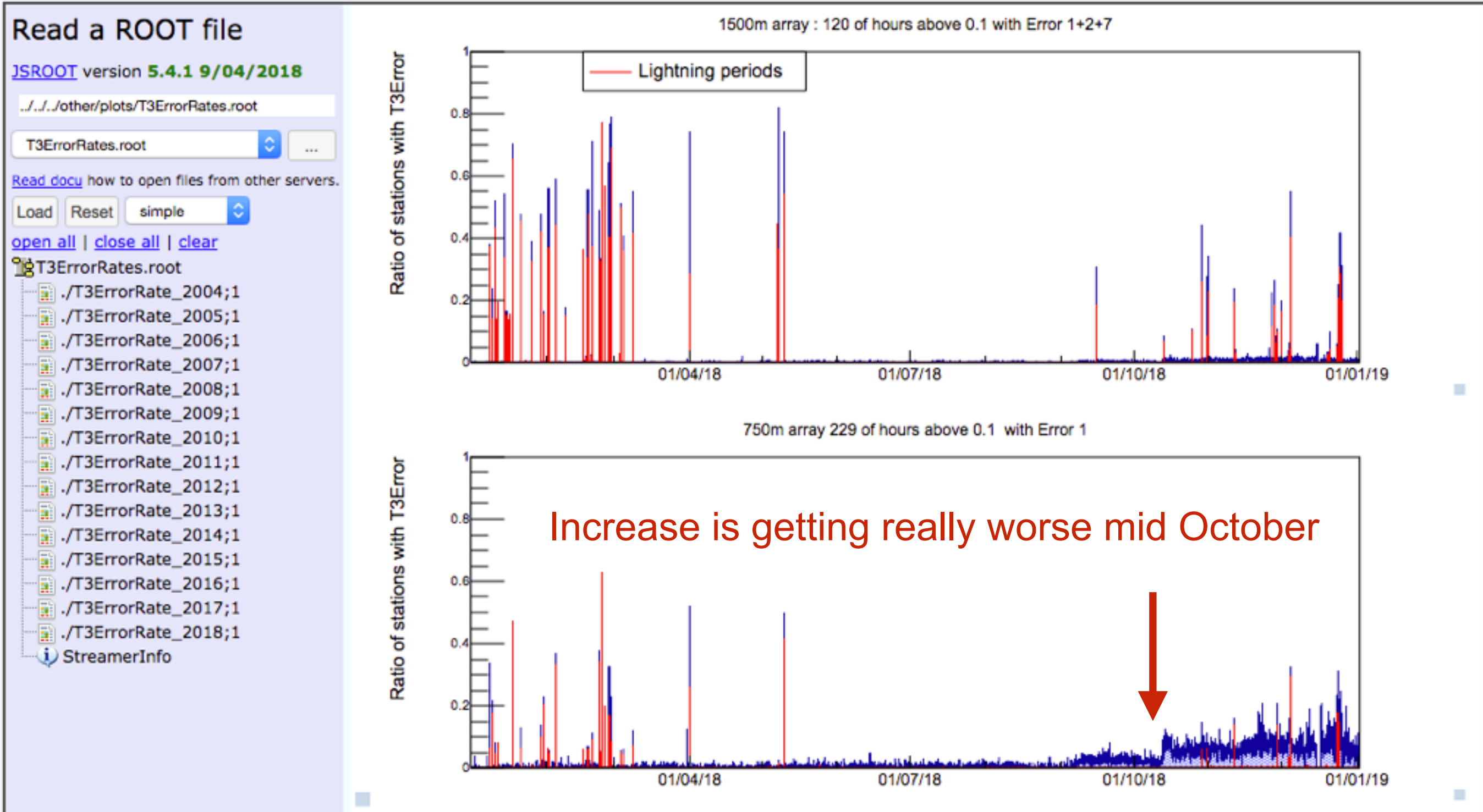


T3 Errors update

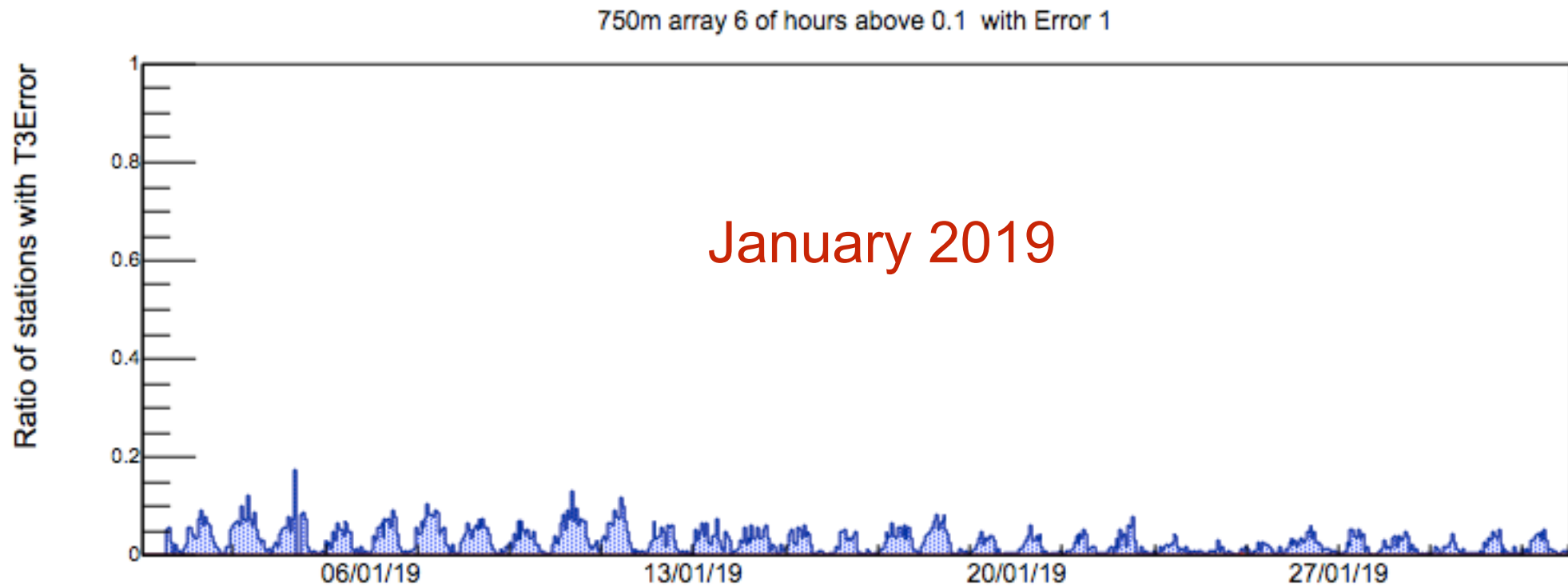
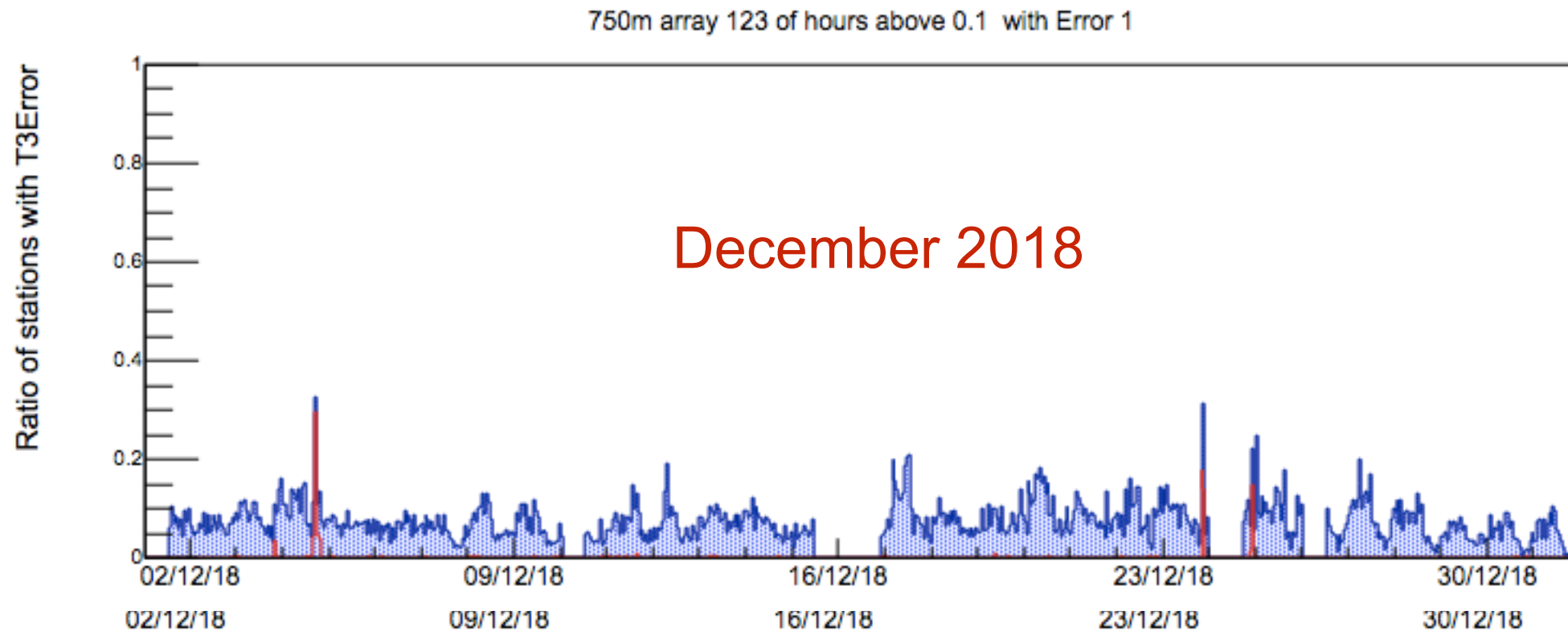
Isabelle Lhenry-Yvon , IPN Orsay

T3 Errors rate (hourly)

The Situation in at the end of 2018

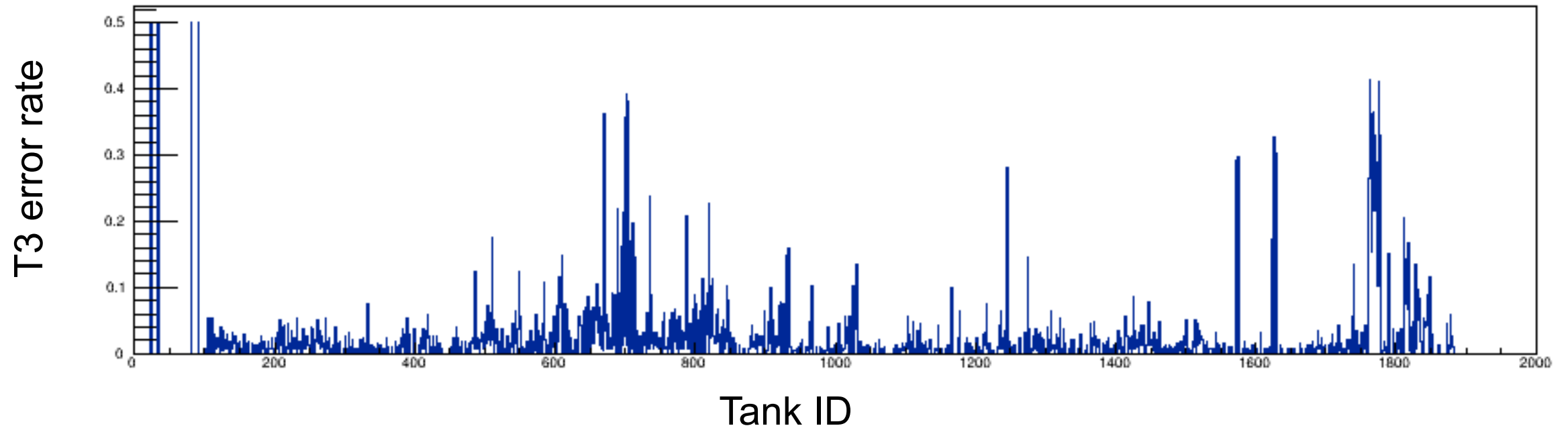


T3 ERRORS in infill array

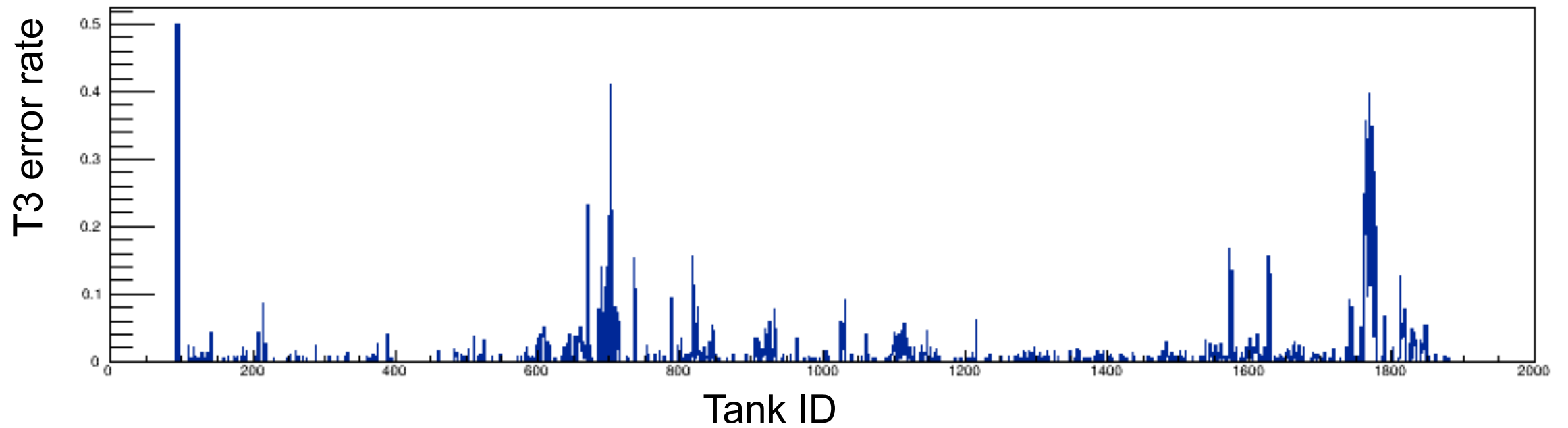


T3 ERRORS in infill array

December 2018



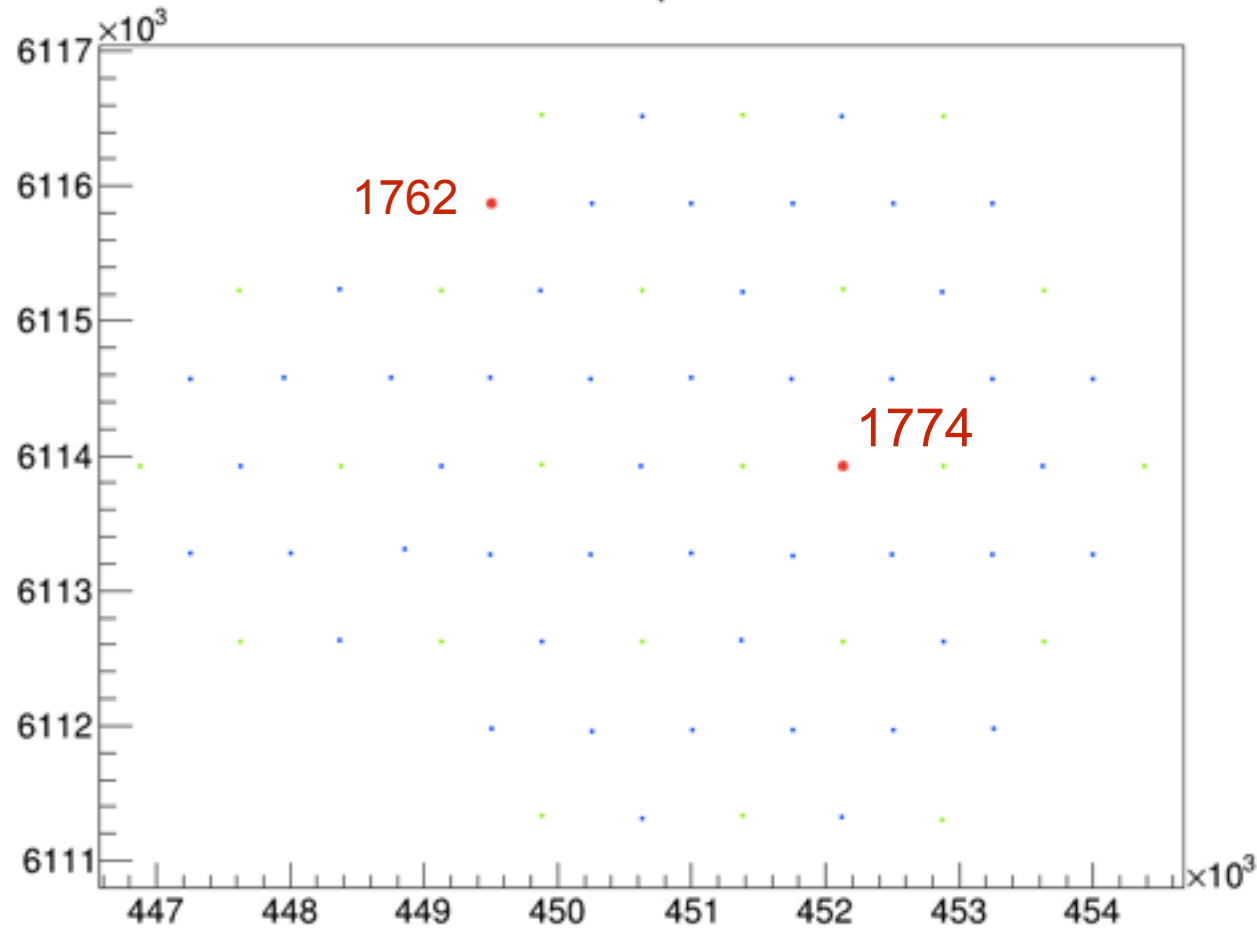
January 2019



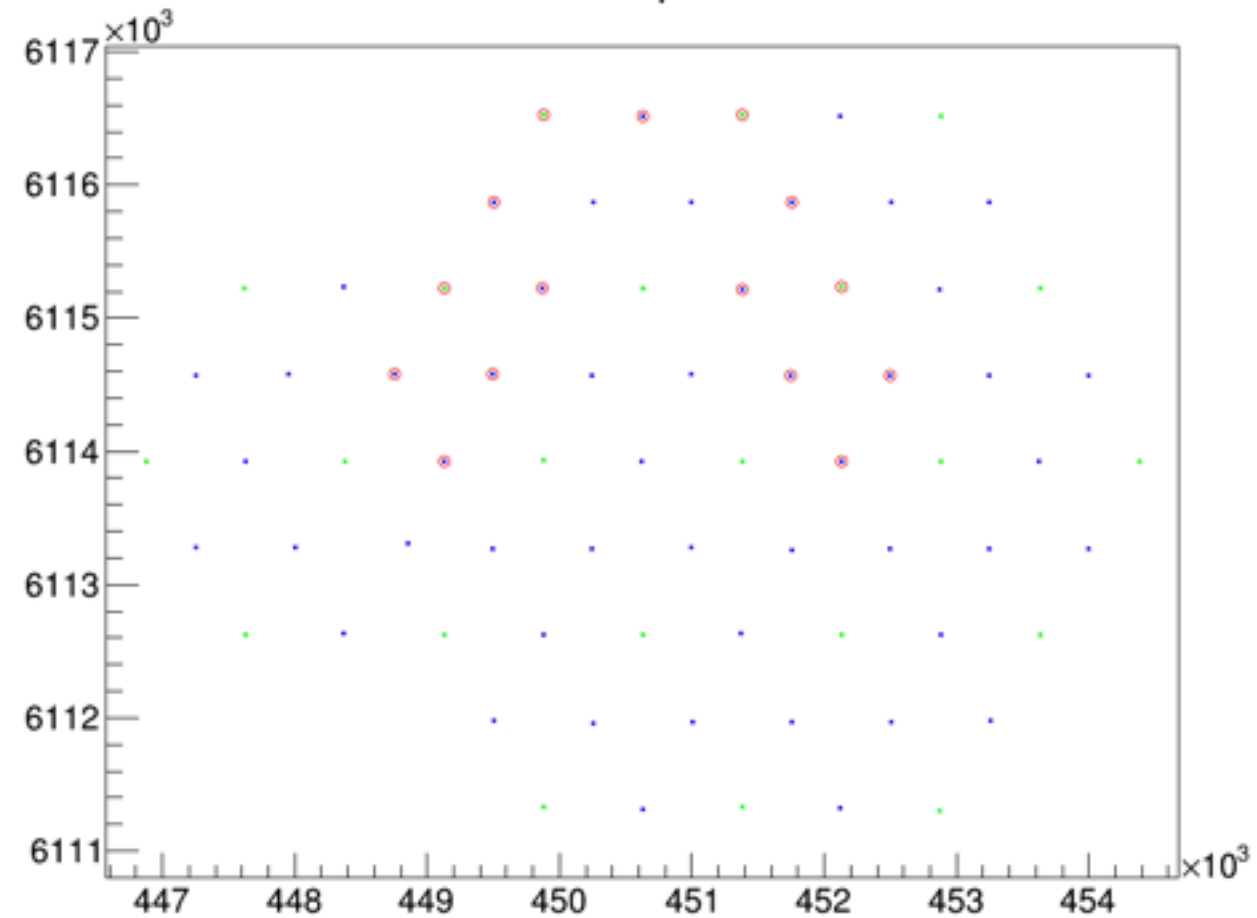
T3 ERRORS in infill array

December 2018

Error rate >40%



Error rate 30%



Error rate 30%

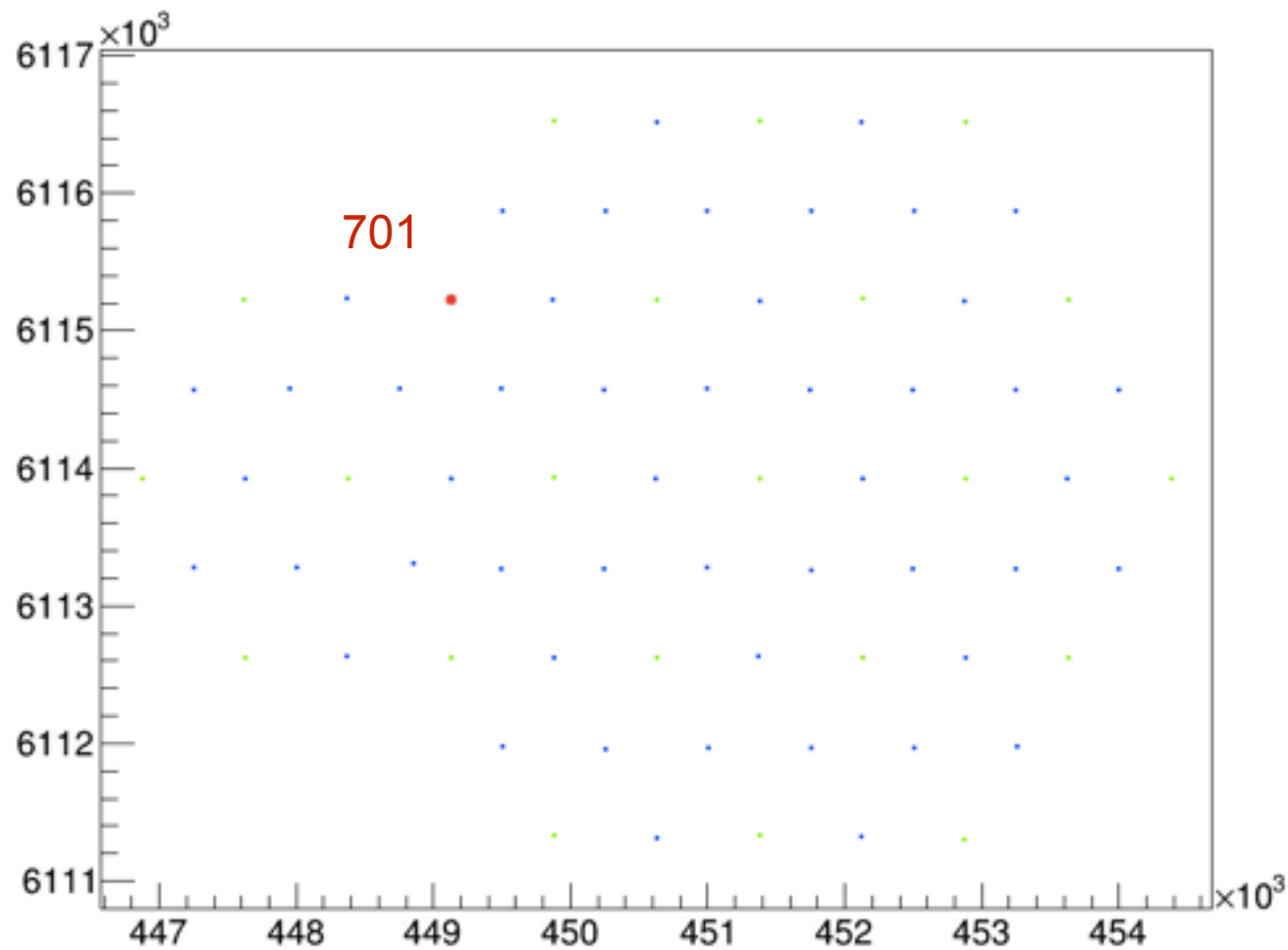
main array : 701,702, 669, 698

Infill: 1570,1574,1622, 1625,1627,1762,1763, 1765,1767,1769,1774,1777,

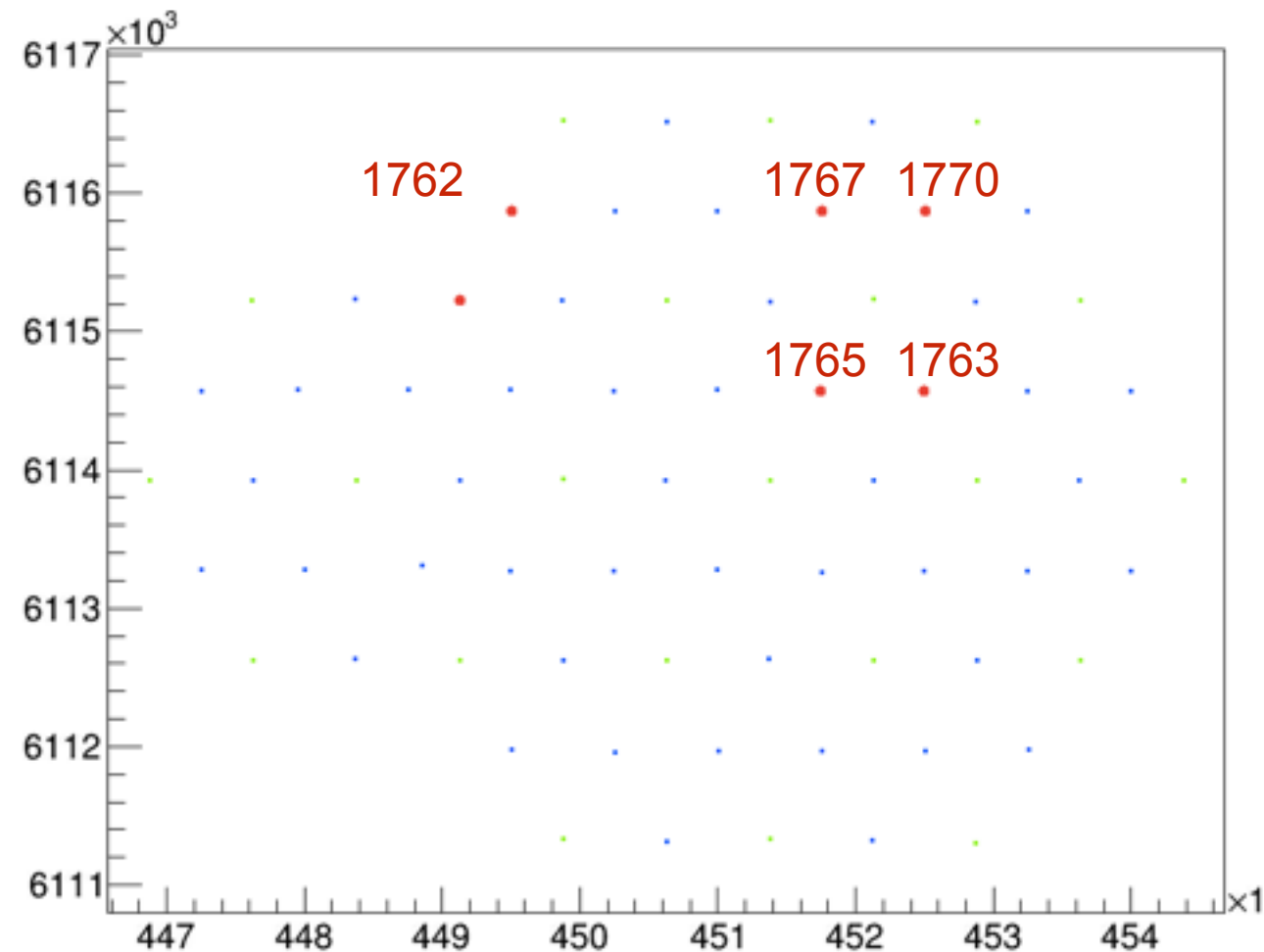
T3 ERRORS in infill array

January 2019

Error rate >40%



Error rate 30%



- * In the list of stations with Amiga stations (thanks Ricardo), the T3 error rate is between 20 and 40%
- * The stations around are affected at the 10% level, which is a usual rate above which we cut periods (famous (or not) T3 errors bad periods based on main array that are usually lightning)