

Conjecture about the 2-Flavour QCD Phase Diagram: preliminary results

M. A. Nava Blanco¹ W. Bietenholz² A. Fernández Téllez¹

¹FCFM-BUAP

²ICN-UNAM

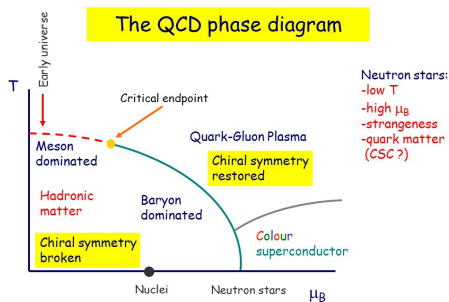
November 15, 2018



Instituto de
Ciencias
Nucleares
UNAM



Motivation



Hypothetical QCD phase diagram.

- The QCD phase diagram is one of the most prominent outstanding mysteries within the Standard Model of particle physics.
- Quarks do have masses, but two flavours are very light compared to the intrinsic scale $\Lambda_{QCD} = 341(12)\text{MeV}$. (Bruno et al., '16)



Instituto de
Ciencias
Nucleares
UNAM



3d O(4) non-linear σ -model

- In QCD with 2 flavors, chiral symmetry breaks spontaneously as $SU(2)_L \times SU(2)_R \rightarrow SU(2)_{L=R}$. This is isomorphic to $O(4) \rightarrow O(3)$, and high T induces dimensional reduction. Therefore, 2-flavor QCD at the chiral phase transition is assumed to belong to the universality class of the 3d O(4) model ("Rajagopal/Wilczek '93"), whose Hamilton function is

$$\mathcal{H} = - \sum_{\langle i,j \rangle} \vec{S}_i \cdot \vec{S}_j, \quad \vec{S}_i \in S^3,$$

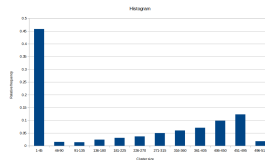
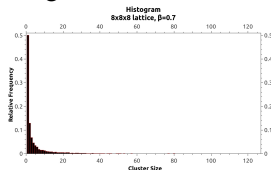
where $\langle i, j \rangle$ means the nearest-neighbor sites on a 3d cubic lattice.



3d O(4) model on an $L \times L \times L$ lattice

Goal: generate field configurations $[\vec{S}] \propto \exp(-\beta\mathcal{H}[\vec{S}])$ for the importance sampling of the functional integral.

Wolff cluster algorithm: choose a random 3d reflection subspace in the 4d spin space. Choose randomly a site i in the lattice. Visit all neighbour sites j of i . Their spins join the cluster with a certain probability. Repeat until the cluster does not grow anymore. Apply the reflection to all spins in the cluster. Cluster size distributions on a $8 \times 8 \times 8$ lattice at $\beta = 0.7$ and $\beta = 1.5$; the latter leads to larger clusters.



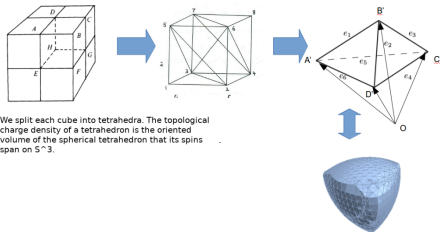
Instituto de
Ciencias
Nucleares
UNAM



Topological charge

The winding number of a field configuration on the sphere S^3 is its topological charge $Q \in \mathbb{Z}$. In our low energy effective theory, it represents the baryon number.

Sketch of 3d O(4) non-linear sigma model



Instituto de
Ciencias
Nucleares
UNAM

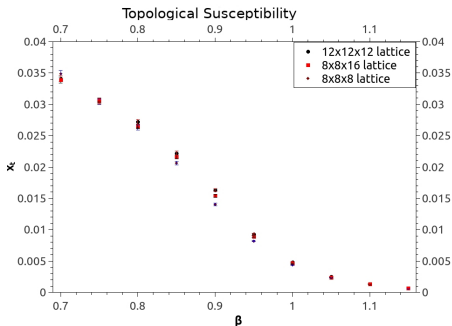


Topological susceptibility.

The definition of topological susceptibility is

$$\chi_t = \frac{\langle Q^2 \rangle}{V},$$

where V is the volume. At large β , there are only few top. windings, which are exponentially suppressed, as one expects for a dilute instanton gas. Below $\beta_c \simeq 0.936 \dots$ the dependence ceases to be exponential - here the top. windings are quite dense, i.e. not dilute anymore.



Instituto de
Ciencias
Nucleares
UNAM

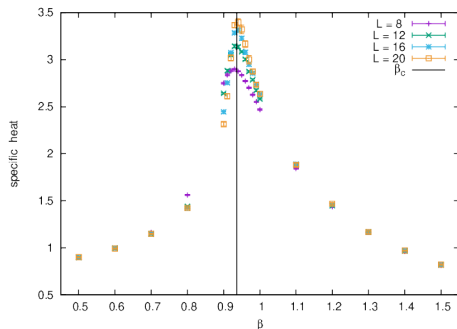


Specific heat

The definition of the specific heat is

$$c = \frac{\beta^2}{V} (\langle \mathcal{H}^2 \rangle - \langle \mathcal{H} \rangle^2)$$

We confirm a peak between $\beta = 0.9$ and 0.95 , where simulations indicate a phase transition of second order at $\beta_c = 0.93590$ (Engels et al., '03).



Instituto de
Ciencias
Nucleares
UNAM



Magnetic susceptibility

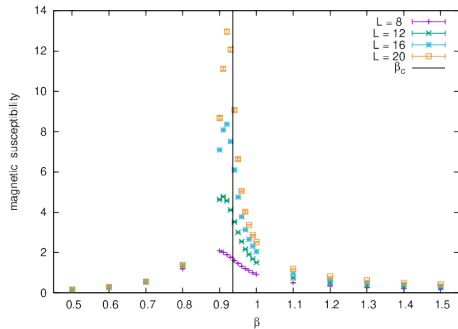
The definition of magnetization is

$$\vec{M} = \sum_x \vec{S}_x$$

from where one defines the magnetic susceptibility

$$\chi_m = \frac{\beta}{V} (\langle M^2 \rangle - \langle |M| \rangle^2).$$

We can see the expected divergence in χ_m increases. In the limit $V \rightarrow \infty$ this peak turns into a divergence due to the phase transition between $\beta = 0.9$ and 0.95 . The peak is enhanced when the volume increases. Thus as one approaches to the limit $V \rightarrow \infty$, this peak turns into a divergence.



Instituto de
Ciencias
Nucleares
UNAM



Correlation lengths

The correlation function $C(r)$ is given by

$$C(r) = \langle \vec{S}_{x3} \cdot \vec{S}_{x3+r} \rangle \propto \cosh\left(\frac{r - L/2}{\xi}\right),$$

where ξ is the correlation length and $\vec{S}_{x3} = \frac{1}{L^2} \sum_{x1, x2} \vec{S}_x$.

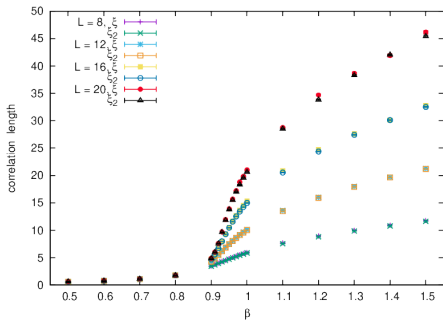
The second moment correlation length is

$$\xi_2 = \left(\frac{(\chi_m / \mathcal{F}) - 1}{4 \sin^2(\pi/L)} \right)^{1/2},$$

where

$$\mathcal{F} = \frac{1}{V} \sum_{x,y} \langle \vec{e}_x \cdot \vec{e}_y \rangle \cos\left(\frac{2\pi(x_1 - y_1)}{L}\right).$$

The physical size is L/ξ . Therefore these data points are affected by strong finite-size effects, except for the data at the lowest β -values. This is why the divergence of ξ at β_c is not yet visible - it will show up in larger volumes.



Instituto de
Ciencias
Nucleares
UNAM



3d O(4) model with baryon density

The 3d O(4) model has been simulated successfully; the results agree with the expected 2nd order phase transition, and the topological charge was measured.

Next the baryonic chemical potential μ_B will be included,

$$\mathcal{H} = - \sum_{\langle ij \rangle} \vec{S}_i \cdot \vec{S}_j + \mu_B Q[\vec{S}]$$

which will reveal the phase diagram of the effective theory at finite baryon density.

Sign problem: the inclusion of μ_B attaches an imaginary part to the Euclidean action S_{QCD}



Instituto de
Ciencias
Nucleares
UNAM



Baryonic density in Monte Carlo simulation

- 1 Build the single cluster using the Wolff algorithm without considering the new term.
- 2 Compute the charge Q for the present configuration, $Q[\vec{S}]$, and for the configuration which would emerge when this flip is performed, $Q[\vec{S}']$.
- 3 Perform a *Metropolis* accept/reject step to decide if flip the cluster or not assuming $\mu_B > 0$.

Metropolis step:

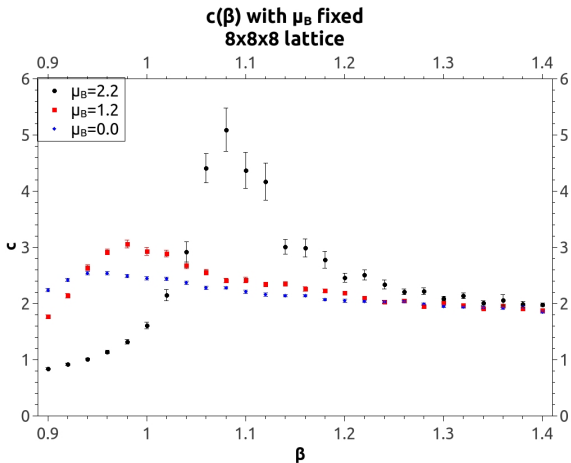
- If the flip decreases Q , flip the cluster.
- If the flip increases Q , flip the cluster with probability $p = \exp(-\mu_B(Q[\vec{S}'] - Q[\vec{S}]))$



Instituto de
Ciencias
Nucleares
UNAM



Preliminary results I



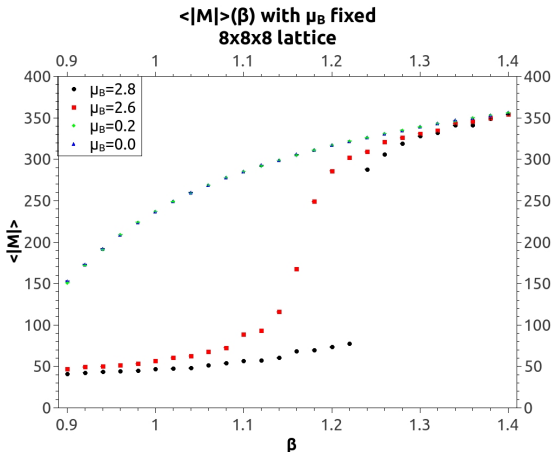
Observe the change in β_c as we rise μ_B .



Instituto de
Ciencias
Nucleares
UNAM



Preliminary results II



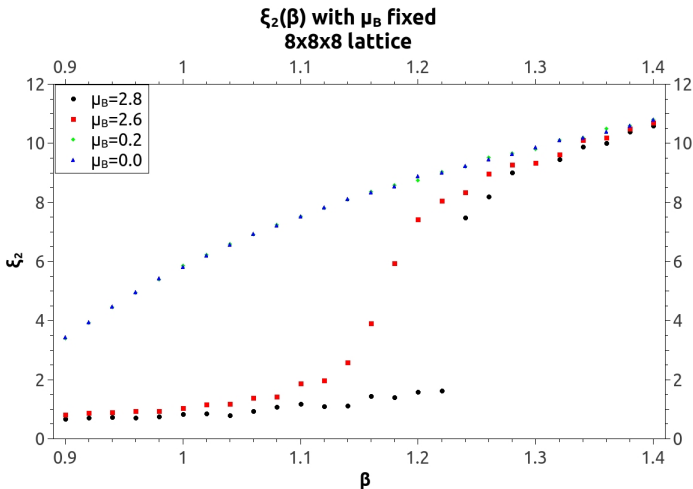
Observe the change in behavior of the plots with different μ_B .



Instituto de
Ciencias
Nucleares
UNAM



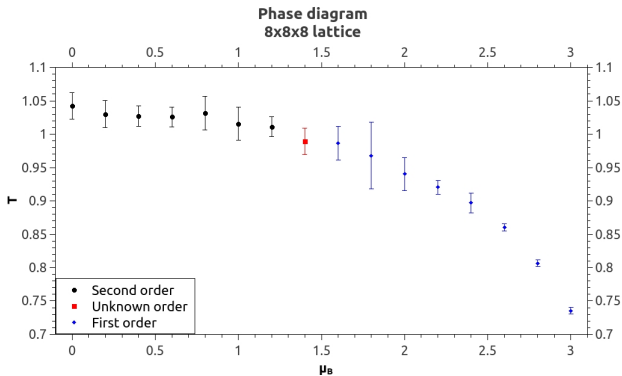
Preliminary results III



Behaviour of ξ_2 . Observe the likeness in behaviour with the parameter order.



Preliminary results IV



Phase diagram for the σ non-linear $3d$ $O(4)$ model



Instituto de
Ciencias
Nucleares
UNAM



Conclusions and Outlook

A preliminary result for the phase diagram of the $3d O(4)$ model has been obtained. To confirm this result L will be risen.
In a future work, the masses of the quarks will be included in this model.



Instituto de
Ciencias
Nucleares
UNAM



Acknowledgments

We thank to Edgar López Contreras, José Antonio García Hernández, B.Sc. Ilya Orson Sandoval Cárdenas, M.Sc. Héctor Miguel Mejía Díaz, Dr. Mario Rodríguez Cahuantzi and Dr. Pedro González Zamora for their help during the realization of this work.



Instituto de
Ciencias
Nucleares
UNAM



THANK YOU



Instituto de
Ciencias
Nucleares
UNAM

